



Shelf Drilling Chaophraya 350 Foot Jack-Up Drilling Unit

General Description	
Design.....	LeTourneau Super 116 E
Year Built.....	2016
Hull Dimensions	243 ft. x 206 ft. x 26 ft.
Spud Can Diameter	50.5 ft.
Legs (3).....	477 ft. long square legs
Quarters Capacity	160 persons
Maximum Water Depth	350 ft.
Cantilever Envelope	70 ft. by 30 ft.
Max Variable Load (drilling).....	Approx. 7,700 kips*
<i>*depending on water depth and geographical location</i>	

Drilling Equipment	
Derrick	Lee C. Moore bottleneck derrick, 170 ft high with 35 ft x 32 ft base, static hook load capacity 1,500,000 lbs. with fourteen (14) 1-3/4" drilling lines
Drawworks	NOV 1625 UDBE, 3,000 HP, driven by three (3) GE 752 DC motors each rated 1,085 HP continuous, outfitted with a Baylor 7838 auxiliary electric brake
Rotary Table	NOV RST-495, 1,100 short tons, hydraulic with 49-1/2 maximum opening
Top Drive	NOV TDS-8, 750 short tons, with PH-100 pipe-handler
Pipe Handling	Main Well Center: Hawk-jaw Junior 65K-2GJR, PS-21 power slips Offline Stand-building: Hawk-jaw Junior 65K-2GJR, Forum 14K-R Offline Activity Crane
Mud Pumps	Three (3) NOV 14-P-220 triplex mud pumps 2,200 HP, 7500 psi, each pump is driven by two (2) DC motors rated 1,085 HP continuous
Solids Control	Four (4) NOV Brandt VSM 300 balanced elliptical motion shale shakers
Instrumentation	NOV Rig-Sense drilling instrumentation system

Storage Capacities	
Liquid Mud.....	5,200 bbls.
Base Oil.....	980 bbls.
Brine.....	980 bbls.
Drill Water	19,672 bbls.
Fuel.....	2,100 bbls.
Bulk Material (7 silos)	12,250 cu.ft.
Sack Storage	5,000 sacks

Power Equipment	
Main Power	Five (5) Caterpillar 3516C HD DITA diesel engines each rated at 2,150 HP @ 1,200 rpm and driving Kato 6P63300 1,596 KW AC generators
Power Dist.	Four (4) NOV Bridge SCR and two (2) NOV VFD, 600 V AC
Emer. Power	One (1) Caterpillar 3512C diesel engine rated 1,476 BHP @ 1,200 rpm driving a Kato 1,120 kW AC generator 1,120

Well Control Equipment	
BOP Stack	One (1) Hydril GX 13.5/8" 5K annular preventer and two (2) Cameron Type U 13.5/8" 10K double ram preventers
BOP Handling	Hercu-Link two (2) points hoist system, 50 short tons each

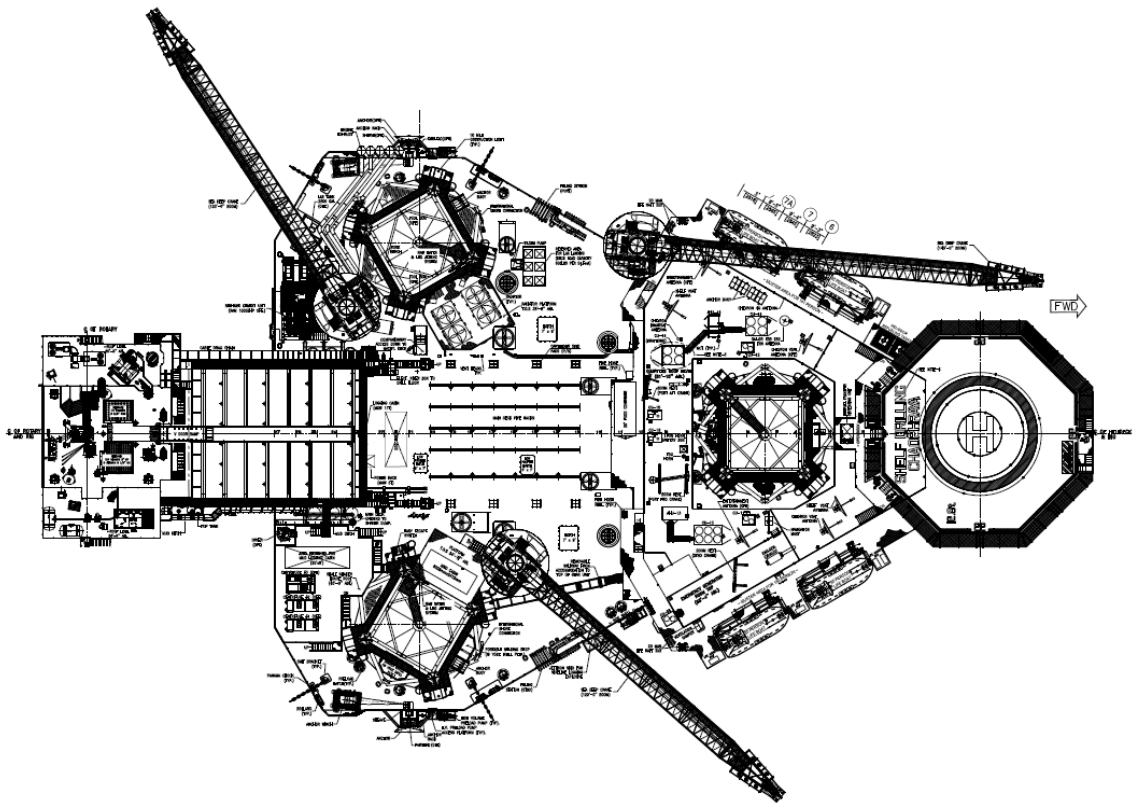
Cranes	
Two (2) SEADEEP SH2000-36 electro-hydraulic cranes with 120 ft boom, rated 57.8 short tons @ 25 ft radius; one (1) SEADEEP SH2000-42 electro-hydraulic crane with 140 ft boom, rated 77.3 short tons @ 29.5 ft radius; two (2) Palfinger PK65002MD cranes; Forum 14K-R overhead crane for offline activity.	

Special Features	
Offline activity including making up drill pipe and casing stands off critical path. Capable for in-field rig move with 600 kips of setback in the derrick. Designed to fill all preload tanks in two hours and one hour to dump.	

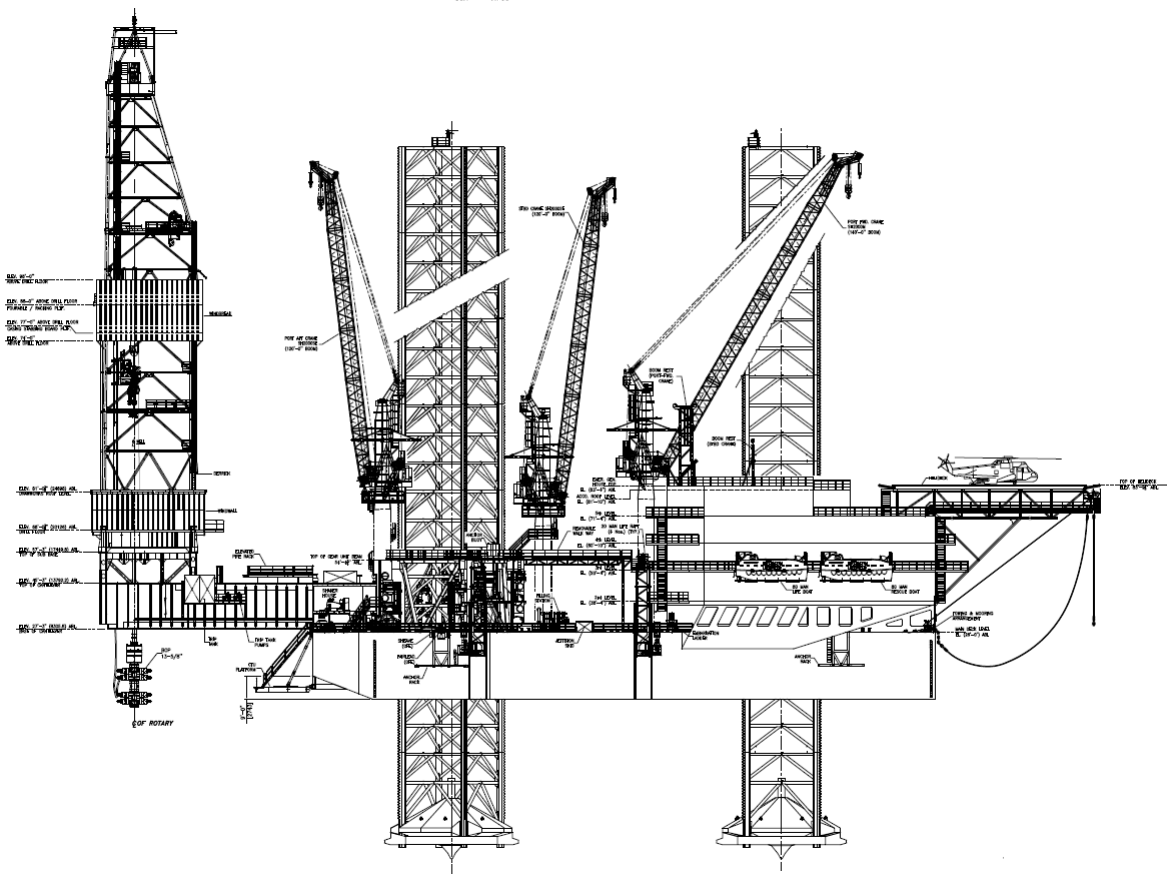
R-Jan-2024



These specifications are intended for general reference purposes only, as actual equipment and specifications may vary based upon subsequent changes, the contract situation and customer needs. All equipment shall be operated and maintained at all times, in compliance with Shelf Drilling policies and procedures, and within its stated operational limits or continuous rated capacity, in order to assure maximum operational efficiency.



TOP PLAN
SCALE - 1:200



OUT BOARD PROFILE
SCALE - 1:200

Shelf Drilling Chaophraya

R-Jan-2024