

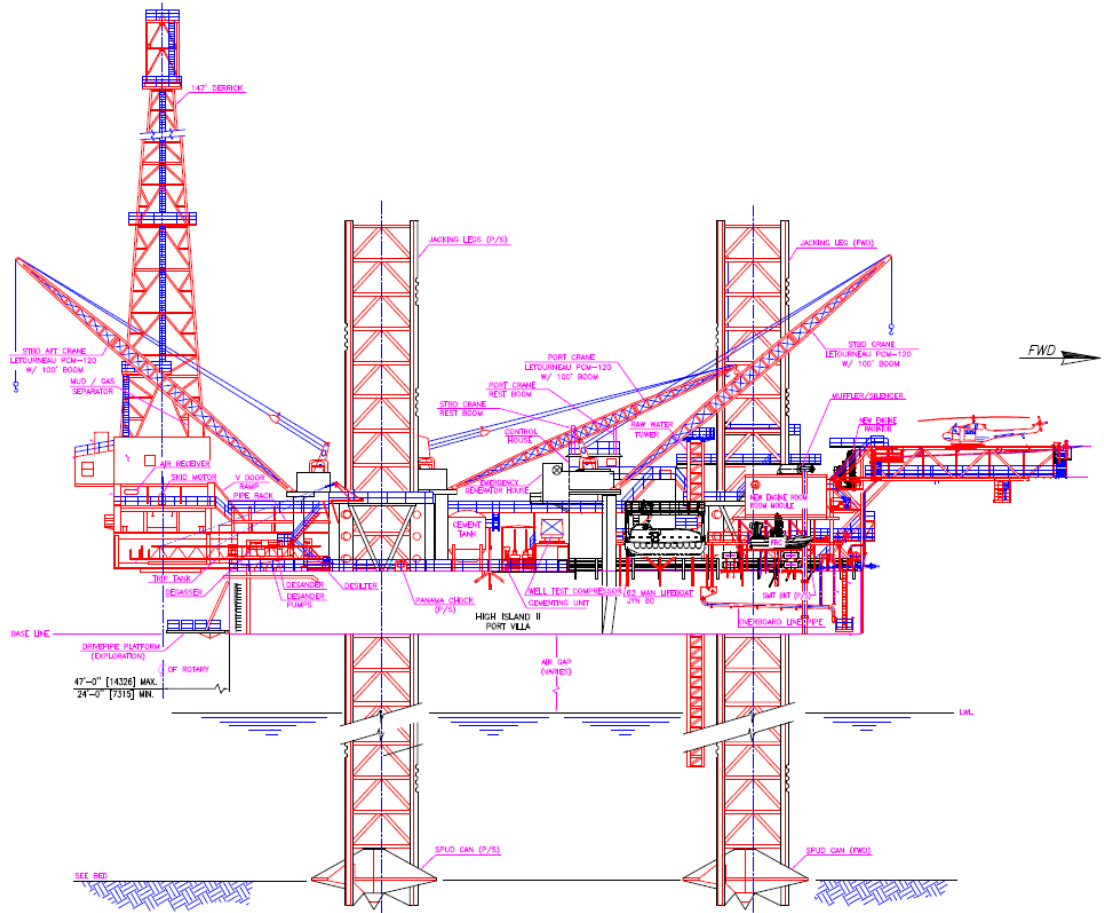
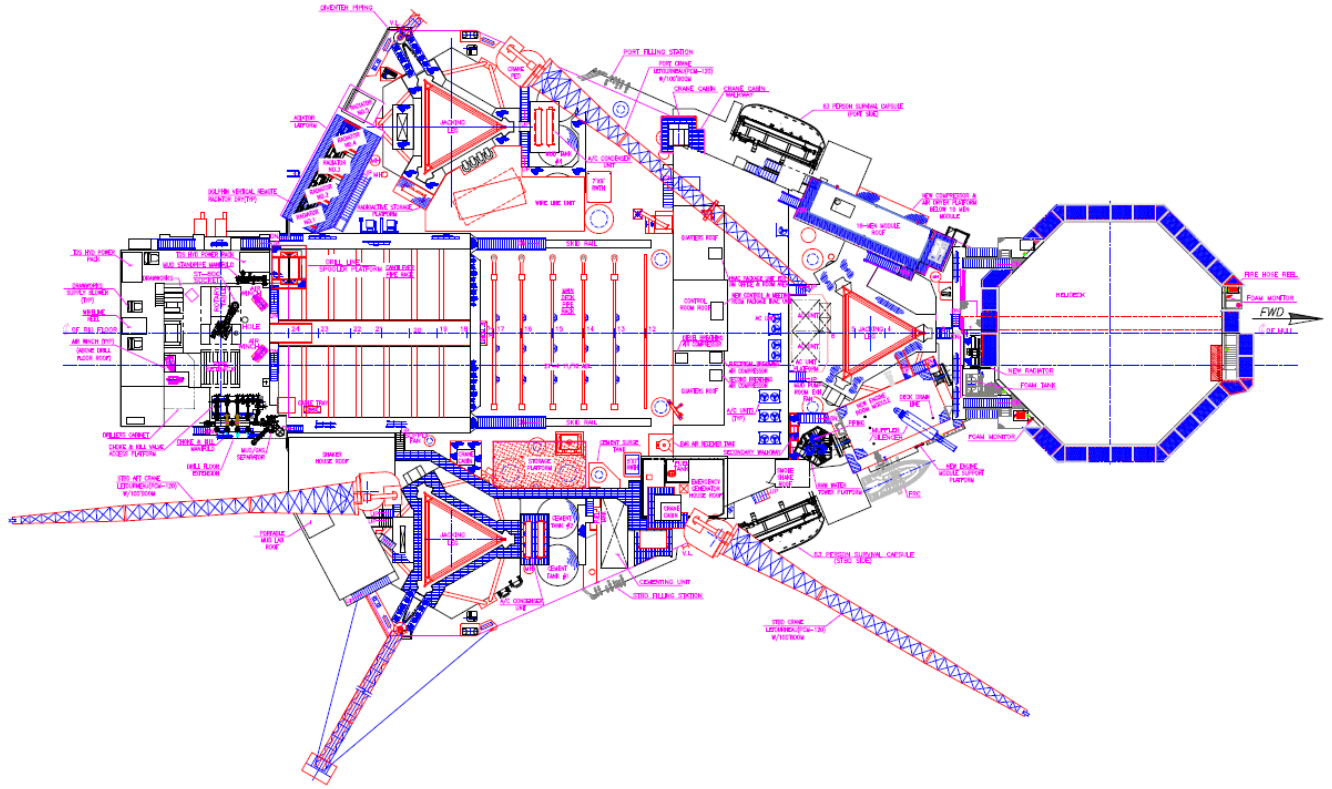


High Island II

270 Foot Jack-Up

General Description		Storage Capacities	
Design	Marathon LeTourneau 82-SD-C	Liquid Mud	2,287 bbls. (including slug pits)
Year Built / Last Upgrade	1979 / 2021	Base Oil	410 bbls.
Hull Dimensions	207 ft. x 176 ft. x 20 ft.	Oil Based Mud	530 bbls.
Legs (3)	394 ft. long triangular	Drill Water	6,619 bbls.
Quarters Capacity	99 persons	Fuel	2,287 bbls.
Maximum Water Depth	270 ft.	Bulk Mud	5,100 cu. ft.
Cantilever Envelope	47 ft. by 20 ft. (with 7 ft. extension)	Bulk Cement	3,400 cu. ft.
Maximum Variable Load (drilling)	Approx. 4,800 kips*	Power Equipment	
	<i>*depending on water depth and geographical location</i>	Main Power	Four (4) Caterpillar D-399TA 1,215 HP engines driving four (4) Kato 1,030 KW 600 volt AC generators plus one (1) Caterpillar 3516C engines driving a Kato 1,525 KW 600 volt AC generator
Drilling Equipment		Power Dist.	Four (4) Ross Hill SCR units Model 1500, 750 volts
Derrick	Continental Emsco 160 ft. x 30 ft. x 30 ft., static hook load capacity 1,000,000 lbs. with twelve (12) lines	BOP Equipment	
Drawworks	National 1320 UE, rated input power 2,000 HP, driven by two (2) GE 752 series DC motors, outfitted with Baylor 7838 auxiliary electric brake	Diverter	Shaffer 30 in. annular rated to 1,000 psi outfitted with two (2) 12 in. discharge lines
Rotary Table	National C-375, 37-1/2 in. driven by an independent DC electric motor with two speed gear box	BOP Stack	13-5/8 in. 10,000 psi WP BOP stack consisting of one (1) Shaffer LXT single ram, one (1) Shaffer LXT double ram equipped with Low Force Shear (LFS) capability and one (1) Shaffer 13-5/8 in. 5,000 psi WP annular
Top Drive	Varco TDS-3H, 500 short tons, 1,130 HP, rated to 31,000 ft.lbs. maximum continuous torque, outfitted with a Varco PH-85 pipe handler	BOP Handling	Ingersoll Rand hoist and trolley handling system with four (4) lift points, 100 short tons safe working load
Pipe Handling	NOV ST-80 for handling tubular ranging from 4-1/2 in. to 8-1/2 in OD.	Cranes	
Mud Pumps	Two (2) National 12-P-160 triplex pumps 1,600 hp, each driven by two (2) GE 752 DC motors, rated to 5,000 psi working pressure.	Three (3) Marathon LeTourneau PCM-120 electric cranes with 100 ft. booms, rated for 50 short tons at 24 ft. radius	
Solids Control	Three (3) NOV Brandt VSM 300 shale shakers plus one (1) NOV Brandt VSM 300 shale shaker equipped with 3 x 10" desander cones and 24 x 4" desilter cones	Special Features	

A seven (7) ft. cantilever extension is available to increase the cantilever maximum skid out distance to 47 ft.



High Island II

R-Apr-2022



These specifications are intended for general reference purposes only, as actual equipment and specifications may vary based upon subsequent changes, the contract situation and customer needs. All equipment shall be operated and maintained at all times, in compliance with Shelf Drilling policies and procedures, and within its stated operational limits or continuous rated capacity, in order to assure maximum operational efficiency.