



High Island V 270 Foot Jack-Up

General Description

| | |
|---|-----------------------------|
| Design | Marathon LeTourneau 82-SD-C |
| Year Built / Last Upgrade | 1981 / 2013 |
| Hull Dimensions | 207 ft. x 176 ft. x 20 ft. |
| Spud Can Diameter | 40 ft. |
| Legs (3) | 394 ft. long triangular |
| Quarters Capacity | 102 persons |
| Maximum Water Depth | 270 ft. |
| Cantilever Envelope | 40 ft. by 20 ft. |
| Maximum Variable Load (drilling) | Approx. 5,000 kips* |

**depending on water depth and geographical location*

Drilling Equipment

| | |
|-----------------------|---|
| Derrick | DSI 160 ft. x 30 ft. x 30 ft. derrick, static hook load capacity 1,000,000 lbs. with twelve lines |
| Drawworks | National 1320 UE, 2,000 HP rated input power, driven by two (2) GE 752 series DC motors, with Elmagco 7838 auxiliary electric brake |
| Rotary Table | National C-375, 37-1/2 in. driven by a GE 752 DC electric motor with two speed gear box |
| Top Drive | Varco TDS-3H, 500 short tons, 1,100 HP motor, maximum continuous torque 31,000 ft.lbs. with Varco PH-85 pipe handler |
| Pipe Handling | NOV ST-80 for handling tubular ranging from 4-1/2 in. to 8-1/2 in OD. |
| Mud Pumps | Two (2) National 12-P-160 triplex pumps 1,600 HP, each driven by two (2) GE 752 DC motors, rated to 5,000 psi working pressure. |
| Solids Control | Four (4) NOV Brandt VSM 300 shale shakers; one (1) MI Swaco Mongoose Pro 3 in 1 Mud Cleaner consisting Type 312 Desander with 3 x 12 in. cones and Type 10T4 Desilter with 10 x 4 in. cones |

Storage Capacities

| | |
|----------------------|------------------------------------|
| Liquid Mud | 1,917 bbls. (including slug tanks) |
| Base Oil | 406 bbls. |
| Drill Water | 6,870 bbls. |
| Fuel | 1,961 bbls. |
| Potable Water | 920 bbls. |
| Bulk Mud | 5,136 cu. ft. |
| Bulk Cement | 3,424 cu. ft. |

Power Equipment

| | |
|--------------------|--|
| Main Power | Four (4) Caterpillar 3512C diesel engines, 1,478 HP driving four (4) KATO 600 volts 1,101 KW AC generators |
| Power Dist. | Four (4) Ross Hill SCR Model 1850 SCR system, 1,200 KW each, 750 volts |

BOP Equipment

| | |
|---------------------|--|
| BOP Stack | 13-5/8 in. x 10,000 psi WP BOP stack consisting of one (1) Shaffer LXT double ram preventers, one (1) Shaffer LXT single ram preventer and one (1) Shaffer SXF 13-5/8 in. 5,000 psi WP annular preventer |
| BOP Handling | Two (2) Ingersoll Rand 25 tons hoist and trolley handling system with four lifting points |

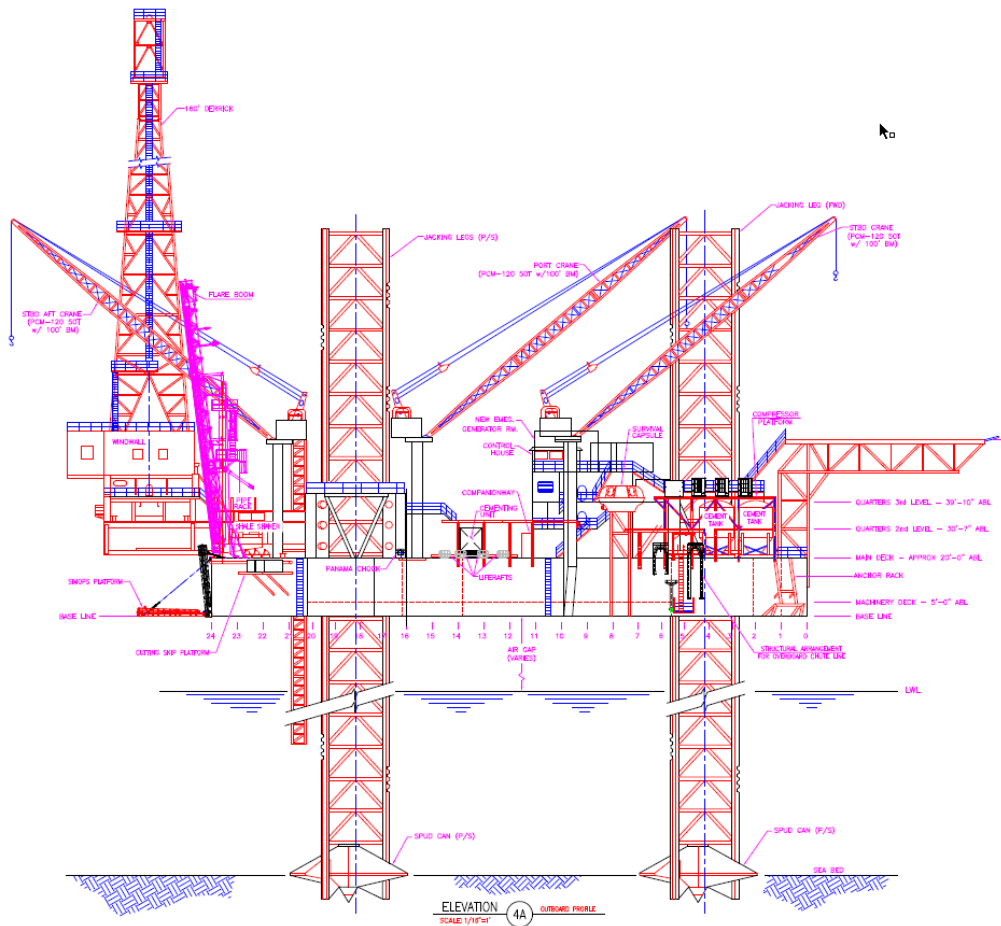
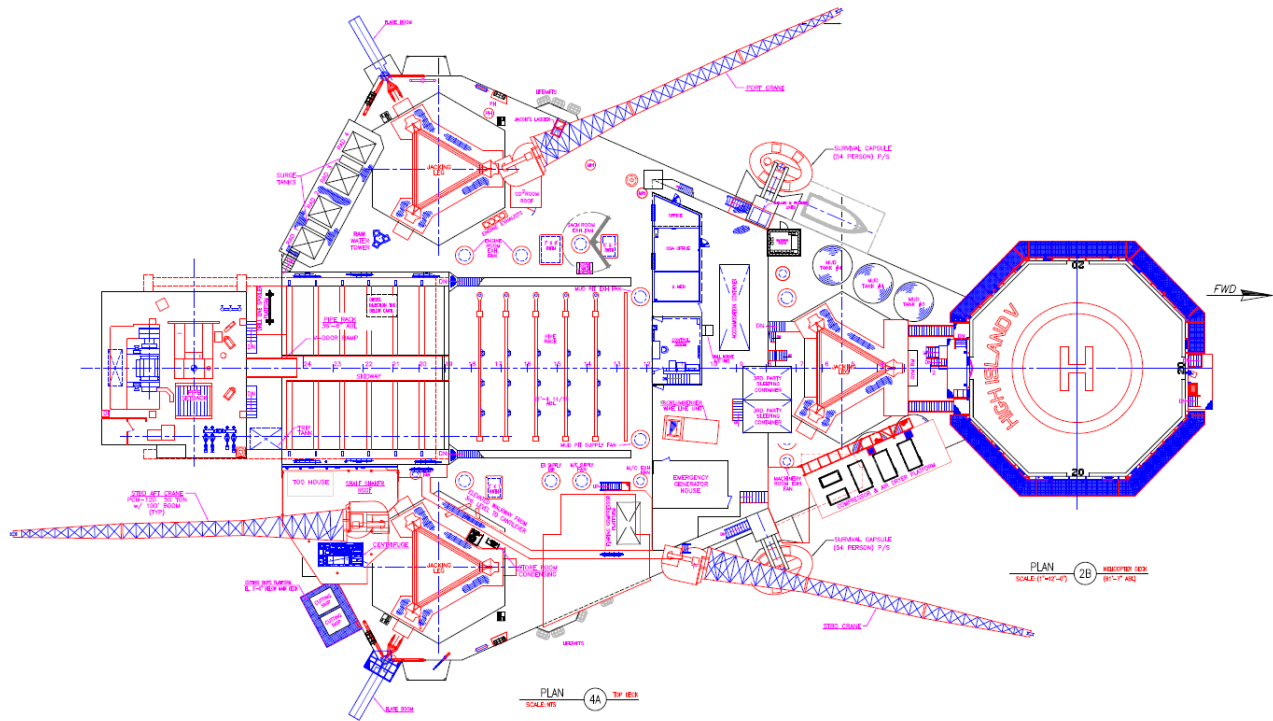
Pedestal Cranes

Three (3) Marathon LeTourneau PCM 120 electric cranes, 100 ft. booms, rated for 50 short tons at 24 ft. radius

R-Jul-2021



These specifications are intended for general reference purposes only, as actual equipment and specifications may vary based upon subsequent changes, the contract situation and customer needs. All equipment shall be operated and maintained at all times, in compliance with Shelf Drilling policies and procedures, and within its stated operational limits or continuous rated capacity, in order to assure maximum operational efficiency.



High Island V

R-Jul-2021



These specifications are intended for general reference purposes only, as actual equipment and specifications may vary based upon subsequent changes, the contract situation and customer needs. All equipment shall be operated and maintained at all times, in compliance with Shell Drilling policies and procedures, and within its stated operational limits or continuous rated capacity, in order to assure maximum operational efficiency.