



SHELF DRILLING SCEPTER

350 Foot Jack-Up Drilling Unit

General Description	
Design	Keppel FELS Super B Class
Year Built / Last Upgrade	2008 / 2019
Hull Dimensions	246 ft. x 218 ft. x 25 ft.
Legs (3)	486 ft. long triangular legs
Quarters Capacity	150 persons
Maximum Water Depth	350 ft.
Cantilever Envelope	70 ft. by 30 ft.
Max Variable Load (drilling)	8,000 kips*

**depending on water depth and geographical location*

Drilling Equipment	
Derrick	NOV Model SSBN-1000/36-36-170/X, 170 ft high with 36 ft x 36 ft base, static hook load capacity 2,120 kips (962 MT) with sixteen (16) 2" drilling lines.
Drawworks	NOV SSGD-850-4600-57 single speed gear-driven 4,600 HP rated input power AC drawworks with regenerative AC braking and disk brake, driven by four (4) Baylor AC motors rated 1,350 HP each
Rotary Table	NOV D-495, 49-1/2 maximum opening, rated to 1,000 short tons, driven by a hydraulic motor
Top Drive	NOV HPS-1000-2E-AC-KT 1,000 ST driven by two (2) GEB 1,150 HP AC motors rated to 78,450 ft. lbs. max. continuous torque, with NOV HPS-1000 pipe-handler
Pipe Handling	Two (2) Hawk Jaw Jr. for handling tubular OD range from 8" to 3-1/2" OD; Stringfisher OHS bridge crane 6 ST SWL; NOV CAT-P15-2-H Hydraulic Make-up / Break-out machine; NOV Hydralift power slips
Mud Pumps	Three (3) NOV 14-P-220 triplex mud pumps 2,200 HP, 7,500 psi WP, each pump is driven by two (2) AC motors
Solids Control	Five (5) Fluid Systems 5000 BLE/500B4 balanced linear elliptical shakers (note. one unit is used with Fluid Systems mud cleaner with 3 x 10" cones and 16 x 4" cones)
Instrumentation	NOV Smart Instrumentation Cyber-base system

Storage Capacities	
Liquid Mud (incl. processing tanks & slug pits)	6,000 bbls.
Base Oil	1,561 bbls.
Brine	1,015 bbls.
Drill Water	21,746 bbls.
Fuel	3,344 bbls.
Bulk Mud (4 silos)	9,608 cu.ft.
Bulk Cement (3 silos)	6,147 cu.ft.
Sack Storage	5,000 sacks

Power Equipment	
Main Power	Five (5) Wartsila 6L26A2 engines each rated to 2,512 HP @ 900 rpm driving Leroy Somers 1,800 KW 690 V AC generators
Power Dist.	Twelve (12) AC Variable Frequency Drive, 600 volts
E-Gen	One (1) Caterpillar 3412TA diesel engine rated 830 HP @ 1,800 rpm driving Stamford 500 KW 480 V AC generators

Well Control Equipment	
BOP Stack	13-5/8 in. x 10K BOP stack comprising of one (1) Cameron Type U double ram; one (1) Cameron Type U single ram; one (1) Hydril 5K annular preventer. <i>(Note: 18-3/4" 15K BOP can be provided as alternative)</i>
BOP Handling	Two (2) JD Neuhaus BH-120 hoists rated to 60 MT each, SWL 120 MT

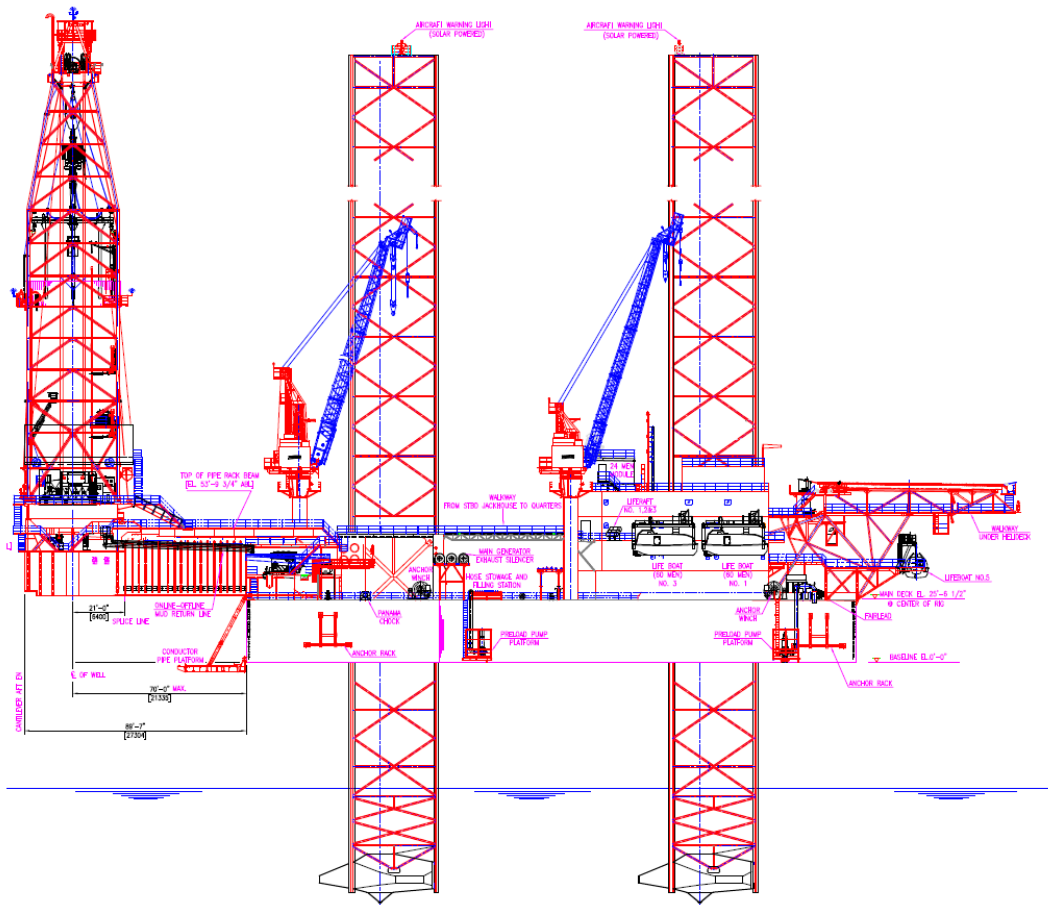
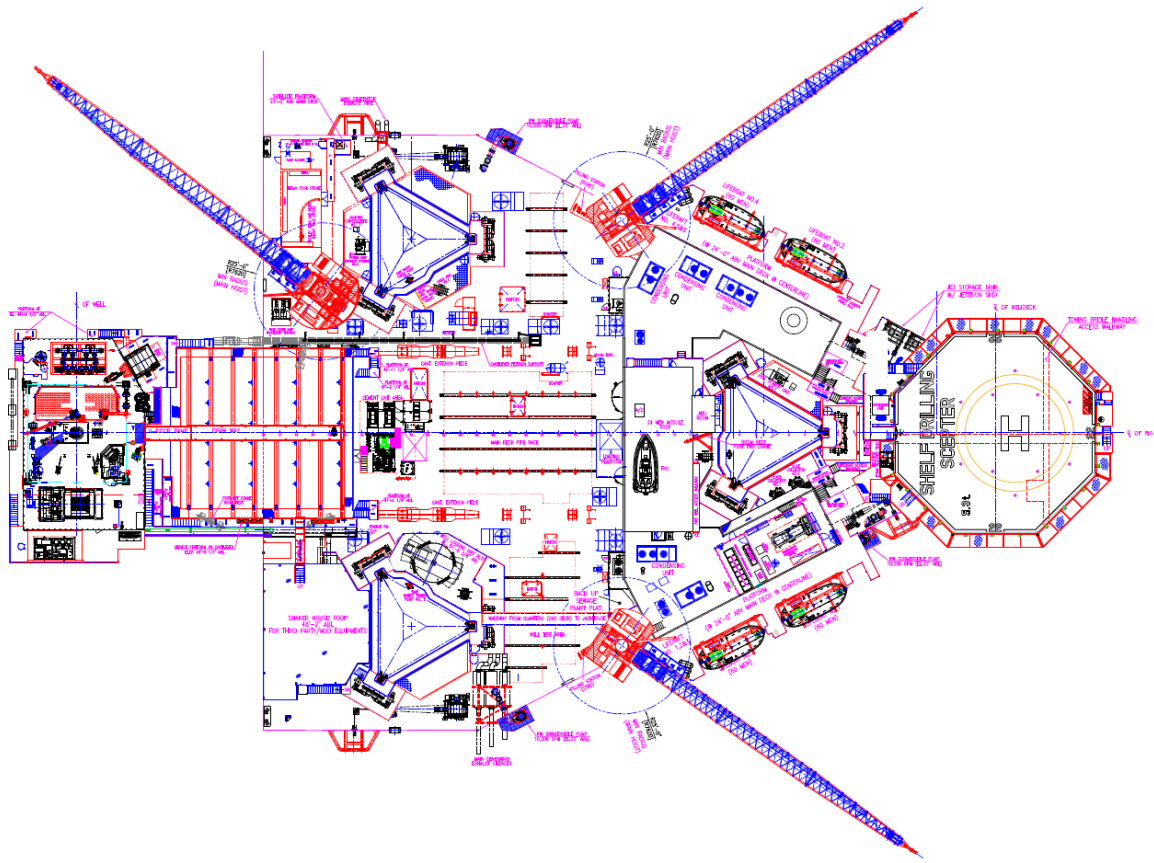
Cranes	
2 x Seatrax S5624 pedestal cranes (port forward & starboard) with 120 ft. boom rated 53 ST @ 25 ft; 1 x Seatrax S7220 pedestal crane (port aft) with 120 ft. boom rated 61.8 ST @ 25 ft.; 2 x Forum MPC-15kVP rated 15,000 lbs.	

Special Features	
Capable for making up tubular and casing (up to 9-5/8") stands offline. Large liquid mud storage capacity. Capable for in-field rig move with 660 kips of setback in the derrick.	

R-Jul-2020 (10K)



These specifications are intended for general reference purposes only, as actual equipment and specifications may vary based upon subsequent changes, the contract situation and customer needs. All equipment shall be operated and maintained at all times, in compliance with Shelf policies and procedures, and within its stated operational limits or continuous rated capacity, in order to assure maximum operational efficiency.



Shelf Drilling Scepter

R-Jul-2020 (10K)



These specifications are intended for general reference purposes only, as actual equipment and specifications may vary based upon subsequent changes, the contract situation and customer needs. All equipment shall be operated and maintained at all times, in compliance with Shelf Drilling policies and procedures, and within its stated operational limits or continuous rated capacity, in order to assure maximum operational efficiency.