



Trident VIII

300 Foot Jack-up Drilling Unit

General Description	
Design	Modec 300 C-35
Year Built / Last Upgrade	1981 / 2018
Hull Dimensions	230 ft. by 210 ft. by 24 ft.
Legs (3)	408 ft. long Triangular
Quarters Capacity	116 persons
Maximum Water Depth	300 ft.
Cantilever Envelope	45 ft. by 24 ft.(or 55 ft by 24 ft. with extension)
Maximum Variable Load (drilling)	Approx. 6,900 kips*

**depending on water depth and geographical location*

Drilling Equipment	
Derrick	Branham 160 ft. x 30 ft. x 30 ft., static hook load of 1,044 kips with twelve (12) lines
Drawworks	Gardner Denver 1500 RE 2,000 HP driven by two GE 752 DC motors, 1-1/2 in. drilling line, with Elmagco 7838 auxiliary brake
Rotary Table	National C-375 650 short tons, driven by GE 752R 800 HP motor
Top Drive	Varco TDS-4S, 650 st with 1,100 HP motor, 45,500 ft.lbs. continuous torque @ 130 rpm; Varco PH85 pipe-handler system
Tubular Handling	NOV ST-80 for tubular OD size 4.1/4" to 8.1/2"
Mud Pumps	Three (3) Gardner Denver PZ11, 5,000 psi triplex pumps, each driven by two GE 752 800 HP DC motors
Solids Control	Four (4) Brandt VSM 300 dual deck shakers 1,050 GPM; one (1) Brandt VSM 300 desander with 3 x 12" cones 1,000 GPM; one (1) Brandt VSM 300 mud cleaner with 20 x 4" cones

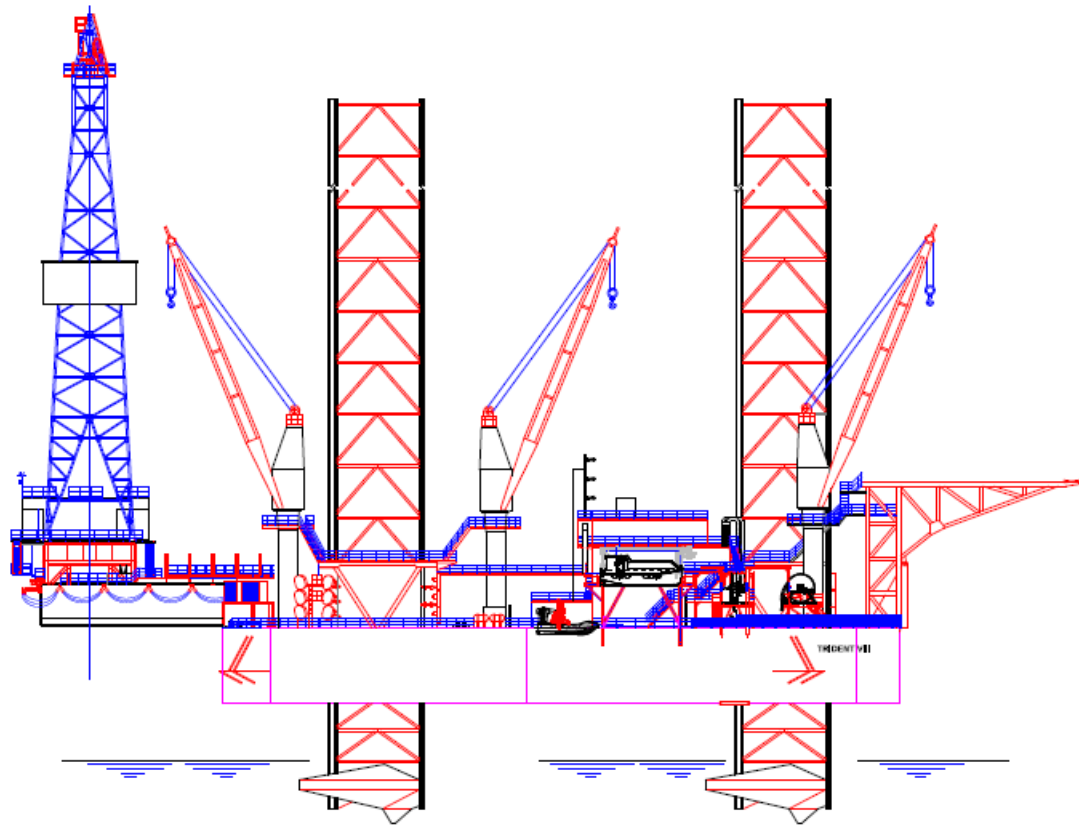
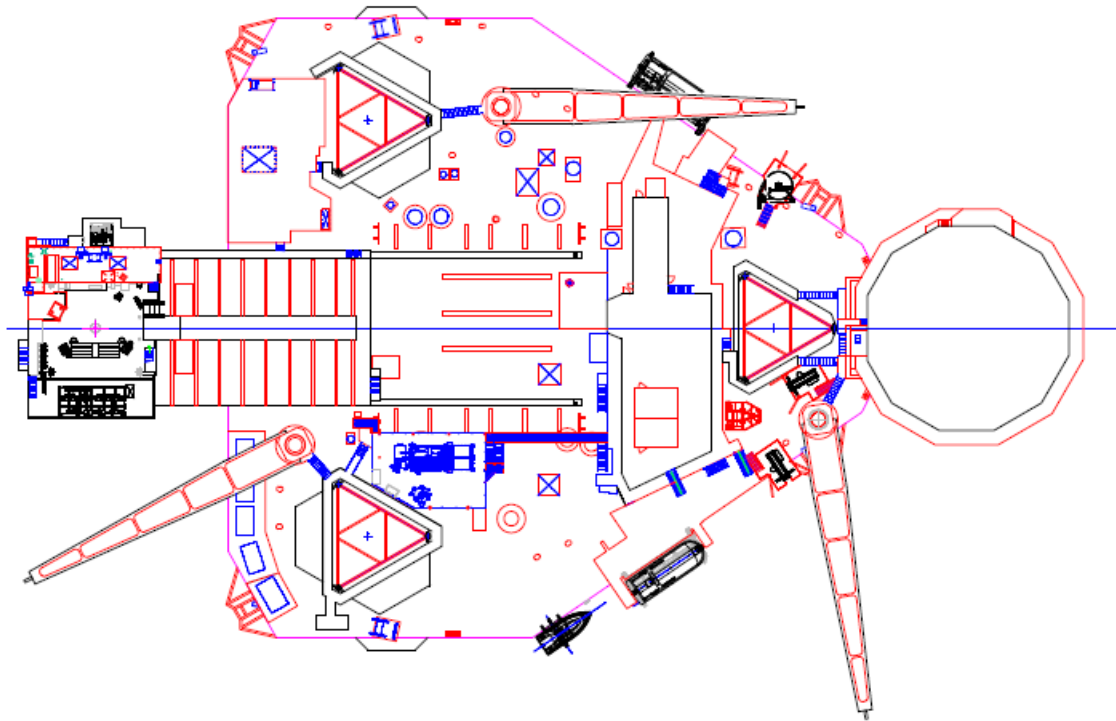
Storage Capacities	
Liquid Mud	2,338 bbls (including Slug Pit)
Base Oil	609 bbls
Drill Water	14,825 bbls
Fuel	3,473 bbls
Bulk Mud	4,500 cu. ft.
Bulk Cement	4,500 cu. ft.

Power Equipment	
Main Power	Four (4) Cat D399 1,215 HP each + one (1) Cat D3512 1,284 HP engines, driving five (5) GE ATI 1,200 kW 600V AC generators
Power Dist.	Seven (7) Hill Graham / Alstom SCR with 750 volts 1,200 kW

Well Control Equipment	
Diverter	Regan KFDJ diverter, 500 psi, 27-1/2 in. maximum bore
13-5/8 in. BOP	One (1) Hydril GK 5K annular preventer; two (2) Cameron Type U 10K double ram preventers

Cranes	
Three (3) Marathon LeTourneau PCM-120 pedestal cranes: one (1) crane with 100 ft. boom rated for 50 short tons at 24 ft. radius; two (2) cranes with 120 ft. booms, rated for 42.5 short tons at 28 ft. radius.	

Special Features	
Shallow Draft: The rig is designed to transit in water depths as shallow as 11 ft (LAT).	
Ten (10) ft. pin on extensions are available to increase the cantilever maximum skid out distance to 55 ft. aft of the stern	



Trident VIII

R-Nov-2018