



# Adriatic I

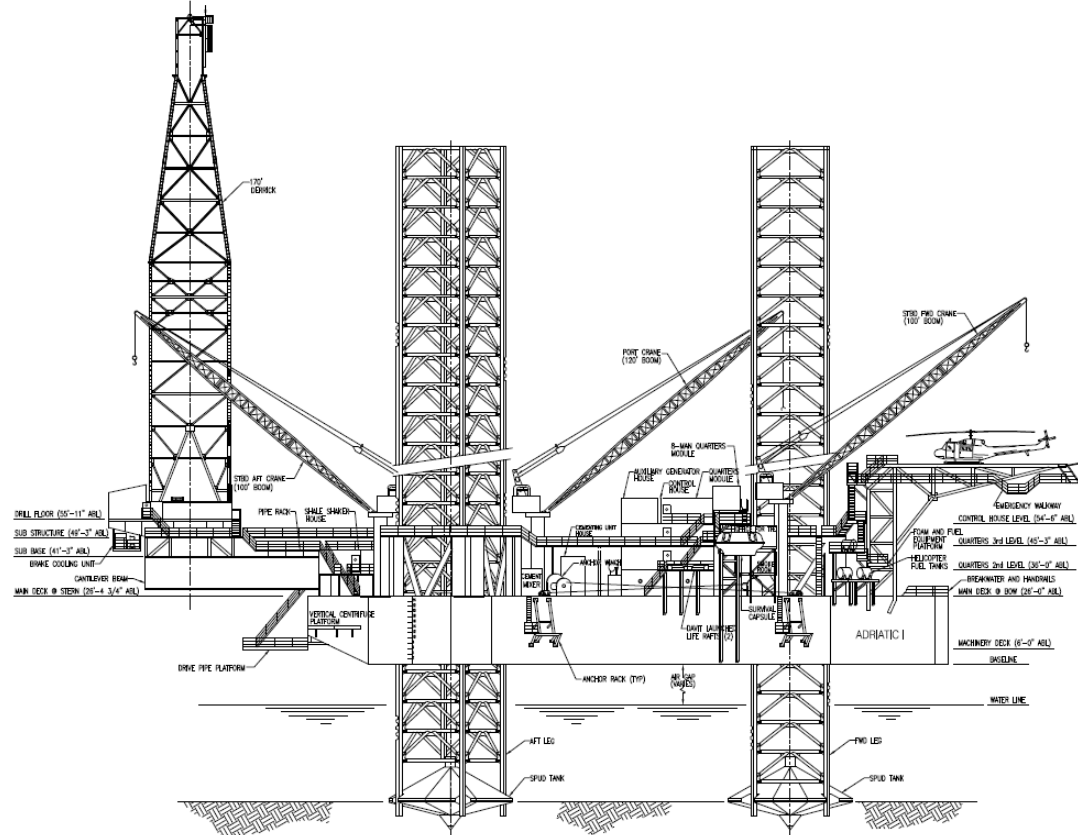
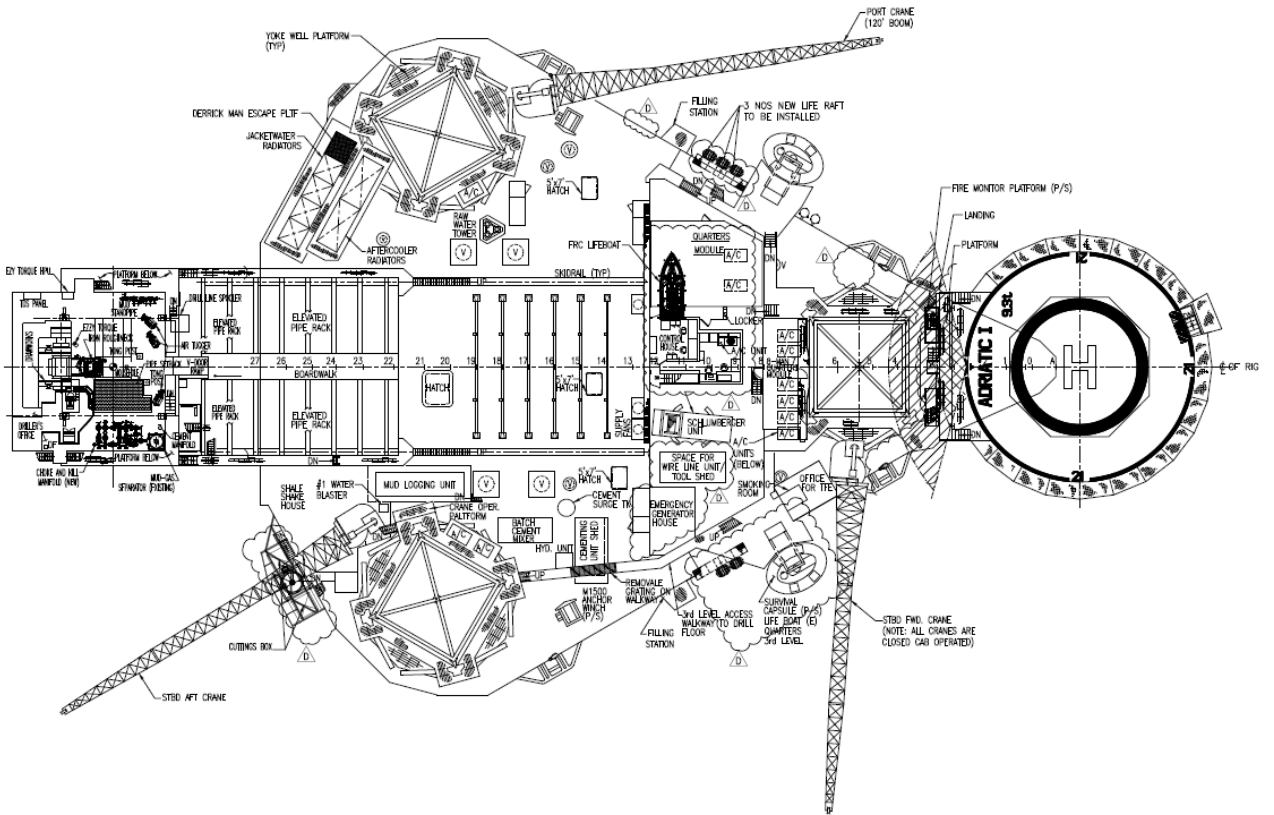
## 350 Foot Jack-Up Drilling Unit

General Description		Storage Capacities	
<b>Design</b> .....	Marathon LeTourneau 116-C	<b>Liquid Mud</b>	2,210 bbls
<b>Year Built / Last Upgrade</b> .....	1981 / 2014	<b>Base Oil</b>	1,294 bbls
<b>Hull Dimensions</b> .....	243 ft. x 200 ft. x 26 ft.	<b>Drill Water</b>	11,759 bbls
<b>Spud Can Diameter</b> .....	46 ft.	<b>Fuel</b>	2,799 bbls
<b>Legs (3)</b> .....	477 ft. long square legs	<b>Bulk Mud</b>	5,500 cu. ft.
<b>Quarters Capacity</b> .....	120 persons	<b>Bulk Cement</b>	4,200 cu. ft.
<b>Maximum Water Depth</b> .....	350 ft.	<b>Power Equipment</b>	
<b>Cantilever Envelope</b> .....	60 ft. by 24 ft. (with 15 ft. extension)	<b>Main Power</b>	Five (5) Caterpillar 3516-B diesel engines, 1,855 HP, driving five (5) KATO 600 volt, 1,305 kw AC generators
<b>Maximum Variable Load (drilling)</b> .....	Approx. 8,800 kips*	<b>Power Dist.</b>	Five (5) Ross Hill SCR units, 2000 amps each, powering ten (10) drilling motors
<i>*depending on water depth and geographical location</i>		<b>Well Control Equipment</b>	
Drilling Equipment		<b>Cranes</b>	
<b>Derrick</b>	Pyramid bottleneck derrick 170 ft. x 30 ft. x 30 ft., static hook load capacity 1,500,000 lbs. with fourteen lines	Three (3) Marathon LeTourneau PCM-120 pedestal cranes, 2 x 100 ft. booms, rated for 50 short tons at 24 ft. radius; 1 x 120 ft. booms, rated for 43 short tons at 28 ft. radius	
<b>Drawworks</b>	National Oilwell 1625 DE, 3,000 HP, driven by three (3) GE 752 DC motors, with drum brake and a Baylor Elmagco 7838 auxiliary electric brake	<b>Special Features</b>	
<b>Rotary Table</b>	National-Oilwell C-375, 37-1/2 in. driven by GE 752 electric motor, 2 speed gear box	Fifteen (15) ft. pin on extensions are available to increase the cantilever maximum skid out distance to 60 ft. aft of the stern.	
<b>Top Drive</b>	Varco TDS-4S, 750 short tons, 1,100 HP, continuous drilling torque 45,500 ft.lbs with a Varco PH-85 pipe handler		
<b>Pipe Handling</b>	Varco AR-3200 iron roughneck for handling tubular ranging from 3-1/2 in. drill pipe to 11-1/4 in drill collars		
<b>Mud Pumps</b>	Three (3) National Oilwell 12-P-160, 1,600 HP triplex pumps, each driven by two GE 752 Hi-Torque DC motors. High pressure mud piping rated to 7,500 psi working pressure.		
<b>Solids Control</b>	Four (4) MI Swaco Mongoose Pro linear motion shakers; two (2) MI Swaco desander units with 3 x 12" cones		

R-Nov-2018



These specifications are intended for general reference purposes only, as actual equipment and specifications may vary based upon subsequent changes, the contract situation and customer needs. All equipment shall be operated and maintained at all times, in compliance with Shelf Drilling policies and procedures, and within its stated operational limits or continuous rated capacity, in order to assure maximum operational efficiency.



## Adriatic I

R-Nov-2018



These specifications are intended for general reference purposes only, as actual equipment and specifications may vary based upon subsequent changes, the contract situation and customer needs. All equipment shall be operated and maintained at all times, in compliance with Shelf Drilling policies and procedures, and within its stated operational limits or continuous rated capacity, in order to assure maximum operational efficiency.