



Main Pass IV 300 Foot Jack-Up

General Description	
Design	Friede & Goldman L-780-MOD II
Year Built / Last Upgrade	1982 / 2012
Hull Dimensions	180 ft. x 175 ft. x 25 ft.
Spud Can Diameter	40 ft.
Legs (3)	416 ft. long triangular
Quarters Capacity	92 persons
Maximum Water Depth	300 ft.
Cantilever Envelope	40 ft. by 24 ft.
Maximum Variable Load (drilling)	Approx. 5,900 kips*
	<i>*depending on water depth and geographical location</i>

Drilling Equipment	
Derrick	DSI 160 ft. x 30 ft. x 30 ft. derrick, static hook load capacity 1,250,000 lbs. with fourteen lines
Drawworks	National 1625 DE, 3,000 HP rated input power, driven by three (3) GE 752 series DC motors, with Baylor 7838 auxiliary electric brake
Rotary Table	National C-375, 37-1/2 in. driven by a GE 752 DC electric motor with two speed gear box
Top Drive	Varco TDS-3H 500 short tons, continuous drilling torque rated to 34,700 ft.lbs., with a Varco PH-85 pipe handler
Pipe Handling	Hawk Spinmaster 950-H for handling tubular OD ranging from 2-7/8 in. to 9-1/2 in.
Mud Pumps	Two (2) National 12-P-160 and one (1) Oilwell A-1700 PT triplex pumps 1,600 HP, each driven by two (2) GE 752 DC motors, rated to 5,000 psi working pressure.
Solids Control	Four (4) VSM 300 shale shakers with the option of cascading or running in series; one (1) desander with 3 x 10 in. cones and one (1) desilter with 20 x 4 in. cones mounted atop of one of the shakers

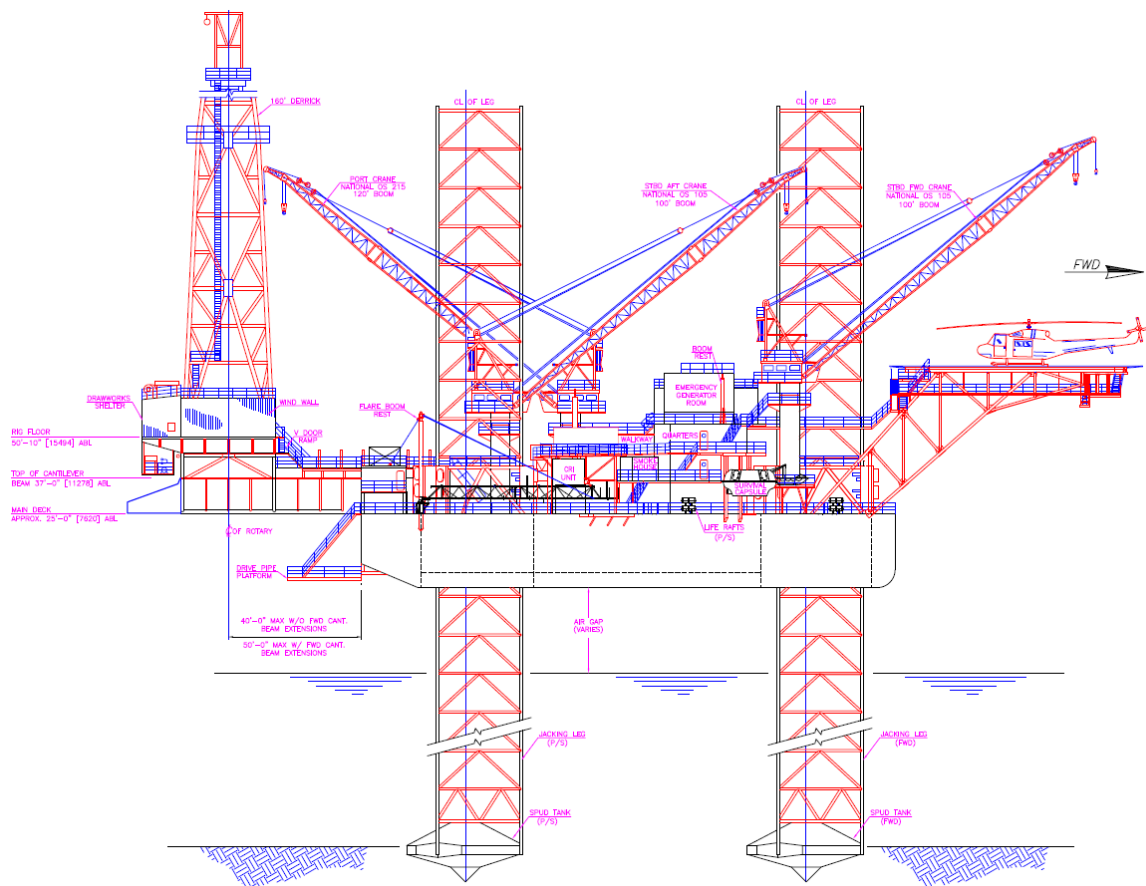
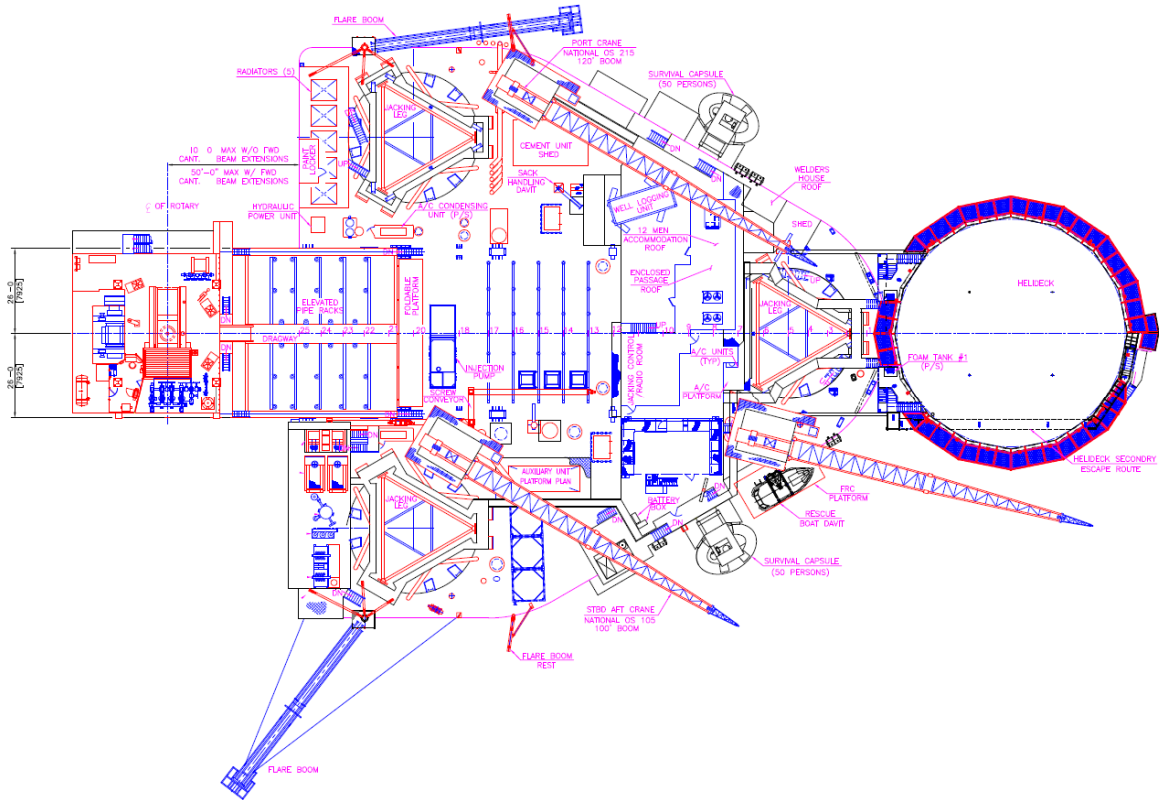
Storage Capacities	
Liquid Mud	2,245 bbls. (including slug pit)
Drill Water	3,392 bbls.
Oil Based Mud	743 bbls.
Fuel	2,470 bbls.
Bulk Mud	4,575 cu. ft.
Bulk Cement	4,110 cu. ft.

Power Equipment	
Main Power	Five (5) Caterpillar D-399TA diesel engines, 1,310 HP driving five (5) KATO 1,030 KW 600 volt AC generators
Power Dist.	Four (4) Ross Hill SCR units, 1600 amps each, 750 volt, powering eight (8) drilling motors

BOP Equipment	
Diverter	Hydril MSP 21-1/4in. 2,000 psi with drilling spool, with a 12 in. full opening ball valves and two (2) 12 in. discharge lines
BOP Stack	13-5/8 in. 10,000 psi WP BOP stack consisting of one (1) Shaffer Type U double ram preventer, one (1) Shaffer Type U single ram preventer and one (1) Shaffer 13-5/8 in. 5,000 psi WP annular preventer
BOP Handling	Ingersoll Rand hoist and trolley handling system rated to 50 short tons with four lifting points

Pedestal Cranes	
	Two (2) National OS105 hydraulic cranes, 100 ft. booms, rated for 40 short tons at 25 ft. radius; one (1) National OS215 hydraulic crane, 120 ft. boom, rated at 55 short tons at 30 ft. radius.

Special Features	
	A ten (10) ft. cantilever extension is available to increase the cantilever maximum skid out distance to 50 ft.



Main Pass IV

R-Jul-2018



These specifications are intended for general reference purposes only, as actual equipment and specifications may vary based upon subsequent changes, the contract situation and customer needs. All equipment shall be operated and maintained at all times, in compliance with Shelf Drilling policies and procedures, and within its stated operational limits or continuous rated capacity, in order to assure maximum operational efficiency.