



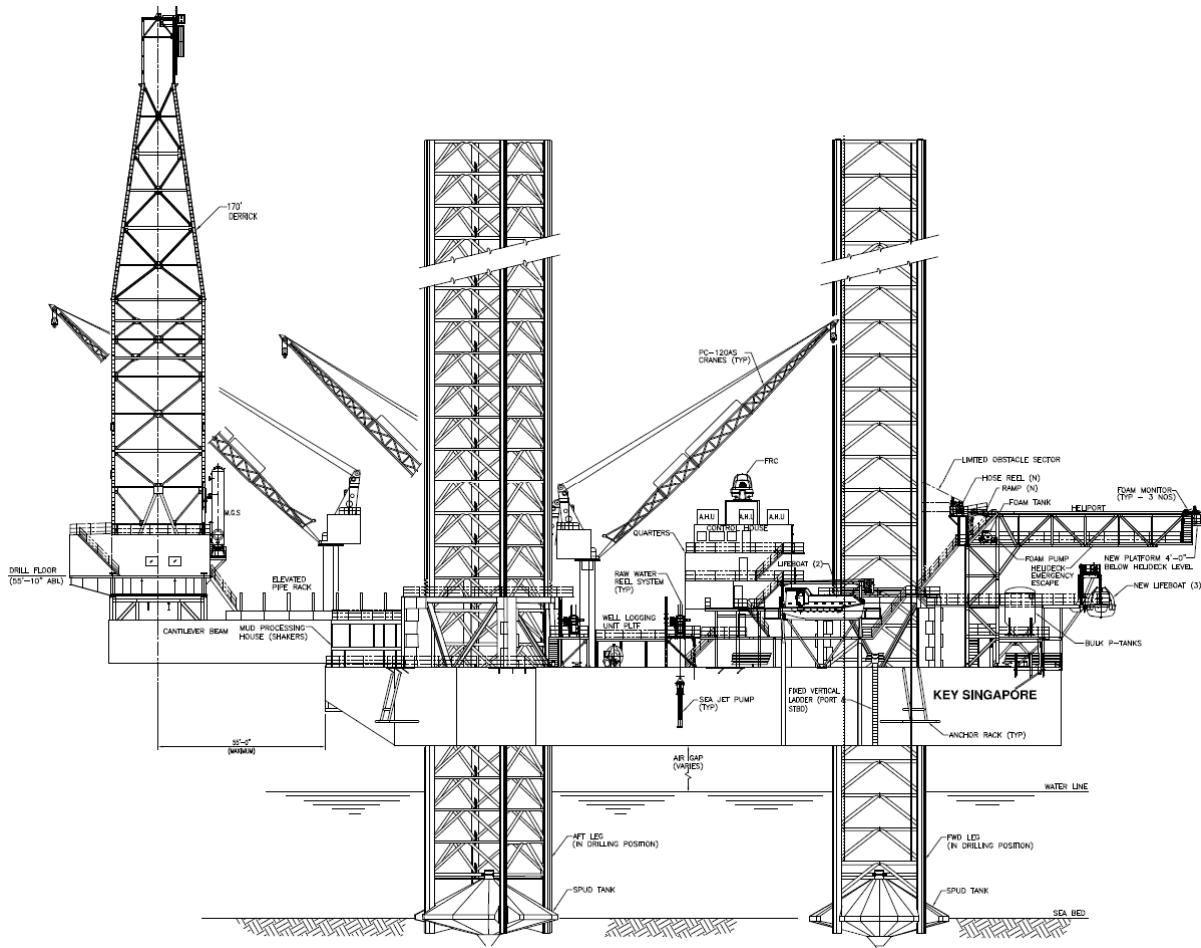
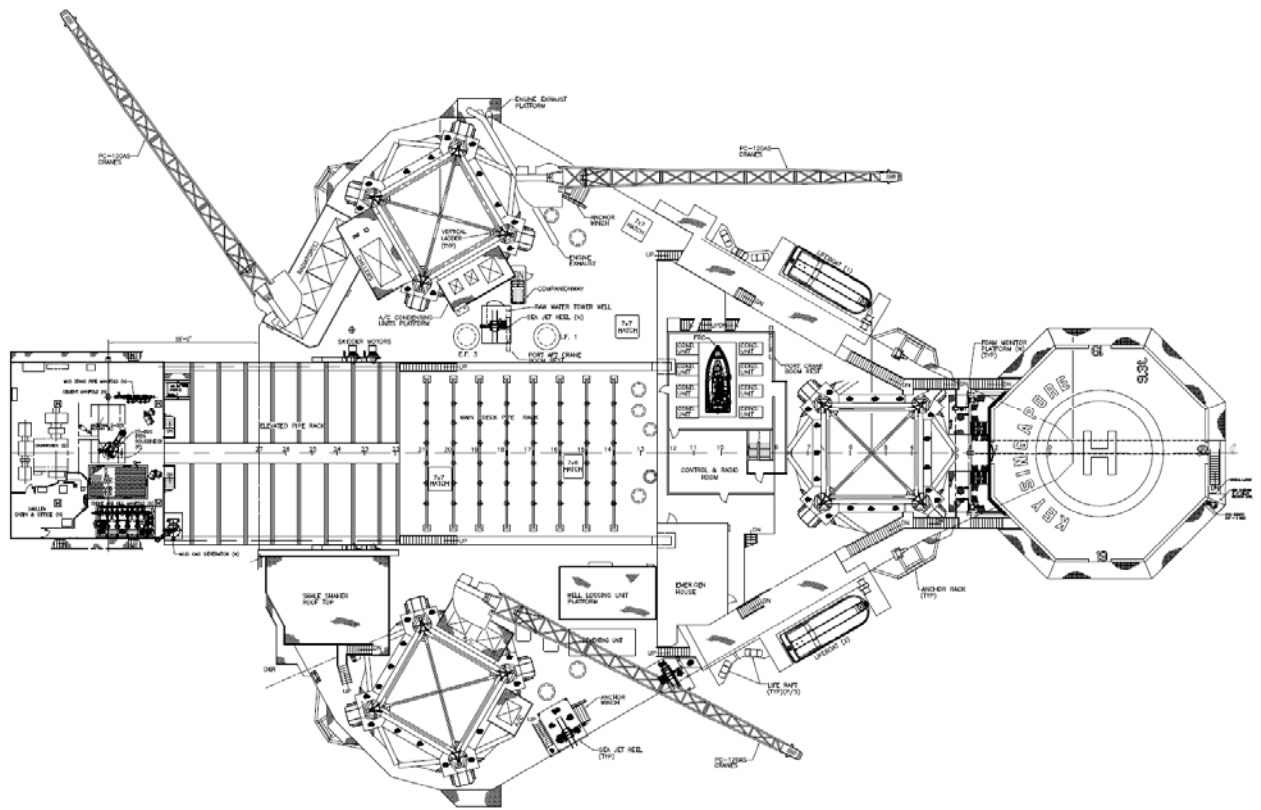
## Key Singapore 350 Foot Jack-Up Drilling Unit

General Description		Storage Capacities	
<b>Design</b> .....	Marathon LeTourneau 116-C	<b>Liquid Mud</b>	3,417 bbls (including slug pit)
<b>Year Built / Last Upgrade</b> .....	1982 / 2015	<b>Drill Water</b>	10,092 bbls
<b>Hull Dimensions</b> .....	243 ft. x 200 ft. x 26 ft.	<b>Base Oil</b>	937 bbls
<b>Spud Can Diameter</b> .....	46 ft.	<b>Brine</b>	1,684 bbls
<b>Legs (3)</b> .....	477 ft. long square legs	<b>Fuel</b>	3,122 bbls
<b>Quarters Capacity</b> .....	120 persons	<b>Bulk Mud</b>	4,000 cu.ft.
<b>Maximum Water Depth</b> .....	350 ft.	<b>Bulk Cement</b>	4,000 cu.ft.
<b>Cantilever Envelope</b> .....	55 ft. by 30 ft.	<b>Power Equipment</b>	
<b>Maximum Variable Load (drilling)</b> .....	Approx. 8,200 kips*	<b>Engines</b>	Three (3) EMD 16-645-EB 2,200 HP main engines driving three (3) EMD AB-20-6 2,625 KVA 2,100 KW AC generators; one (1) Caterpillar D-399 1,215 HP emergency engine driving a Kato 1,030 KW AC generator
<i>*depending on water depth and geographical location</i>		<b>Power Dist.</b>	Five (5) Ross Hill SCR units, each rated at 1,600 amperes, powering ten (10) GE 752 DC motors
Drilling Equipment		Well Control Equipment	
<b>Derrick</b>	Pyramid bottleneck derrick 170 ft. x 30 ft. x 30 ft., static hook load capacity 1,500,000 lbs with fourteen (14) lines	<b>Diverter</b>	Hydril MSP 29-1/2" maximum bore, 500 psi working pressure, with two (2) 12 in. discharge lines and hydraulic ball valves
<b>Drawworks</b>	National Oilwell 1625 DE, 3,000 HP rated input power driven by two (2) GE 752 Hi-Torque DC motors, with drum brake and a Baylor 7838 auxiliary electric brake	<b>BOP Stack</b>	One (1) Hydril GK 13.5/8" 5,000 psi annular preventer; two (2) Cameron Type U 13.5/8" 10,000 psi double ram preventers
<b>Rotary Table</b>	National-Oilwell C-375, 37-1/2 in. driven by GE 752 electric motor, two-speed gear box	<b>BOP Handling</b>	Four (4) 30 short tons Ingersoll Rand hoists and trolley system
<b>Top Drive</b>	Varco TDS-4S, 750 st 1,130 HP rated to maximum continuous drilling torque of 45,500 ft. lbs., outfitted with a Varco PH-85 pipe handler	<b>Cranes</b>	
<b>Pipe Handling</b>	Varco ST-80C for tubular OD size from 4-1/4" to 8-1/2"	Three (3) Marathon LeTourneau PCM-120 pedestal cranes with 100 ft. booms, rated for 50 short tons at 24 ft. radius	
<b>Mud Pumps</b>	Three (3) 1,600 HP triplex pumps consisting of two (2) National 12-P-160 & one (1) Continental Emsco FB 1600. High pressure piping rated to 7,500 psi WP.		
<b>Solids Control</b>	Three (3) Mi Swaco MD-2 shale-shakers and one (1) MI Swaco Mongoose Pro Three-In-One shaker and mud cleaner with 3 x 12" cones and 10 x 4" cones		

R-Jul-2018



These specifications are intended for general reference purposes only, as actual equipment and specifications may vary based upon subsequent changes, the contract situation and customer needs. All equipment shall be operated and maintained at all times, in compliance with Shelf Drilling policies and procedures, and within its stated operational limits or continuous rated capacity, in order to assure maximum operational efficiency.



## Key Singapore

R-Jul-2018



These specifications are intended for general reference purposes only, as actual equipment and specifications may vary based upon subsequent changes, the contract situation and customer needs. All equipment shall be operated and maintained at all times, in compliance with Shelf Drilling policies and procedures, and within its stated operational limits or continuous rated capacity, in order to assure maximum operational efficiency.