



## C.E. Thornton 300 Foot Jack-up Drilling Unit

General Description	
<b>Design</b> .....	Marathon LeTourneau 53-SC
<b>Year Built / Last Upgrade</b> .....	1974 / 1984
<b>Hull Dimensions</b> .....	218 ft. x 201 ft. x 26 ft.
<b>Legs (3)</b> .....	410 ft. long square legs
<b>Quarters Capacity</b> .....	113 persons
<b>Maximum Water Depth</b> .....	300 ft.
<b>Cantilever Envelope</b> .....	45 ft. by 24 ft.
<b>Maximum Variable Load (drilling)</b> .....	4,200 kips*

*\*depending on water depth and geographical location*

Drilling Equipment	
<b>Derrick</b>	Lee C. Moore 147 ft. x 30 ft. x 30 ft., static hook load capacity 1,000,000 lbs. with twelve lines (1-1/2 in. drilling line)
<b>Drawworks</b>	Oilwell E-3000, rated input power 3,000 HP driven by two (2) GE DC motors rated 1,000 HP each; outfitted with Elmagco 7838 auxiliary electric brake
<b>Rotary Table</b>	Oilwell B-375, 650 short tons, 37-1/2 in. maximum opening driven by GE 752 DC motor with 2-speed transmission
<b>Top Drive</b>	Varco TDS-4S, 650 short tons, 1,000 HP motor, rated to 45,500 ft.lbs. maximum continuous torque, outfitted with a Varco PH-85 pipe handler
<b>Pipe Handling</b>	NOV ST-80C for handling tubular OD sizes ranging from 4-1/4 in. to 8-1/2 in.
<b>Mud Pumps</b>	Two (2) Oilwell A 1700-PT, 1,600 HP triplex pumps, each driven by two (2) GE 752 800 HP DC motors
<b>Solids Control</b>	Four (4) VSM 300 linear motion shale shakers; one (1) Derrick S2-12 Desander with 2 x 10" cones; one (1) Derrick Hydroclone Desilter with 10 x 4" cones; two (2) MI Swaco mud centrifuges and (one) MI Swaco Verti-G Cuttings Dryer

Storage Capacities	
<b>Liquid Mud</b>	1,836 bbls (including slug pit & gel tank)
<b>Base Oil</b>	844 bbls
<b>Drill Water</b>	8,898 bbls
<b>Fuel</b>	2,637 bbls
<b>Bulk Mud</b>	4,160 cu. ft.
<b>Bulk Cement</b>	3,120 cu. ft.

Power Equipment	
<b>Main Power</b>	Five (5) Caterpillar D399 engines rated 1,350 HP each, driving two (2) GE ATI 800 KW AC generators, three (3) KATO 750 KW AC generators
<b>Power Dist.</b>	Four (4) Ross Hill SCR units 750 KW 750 volts

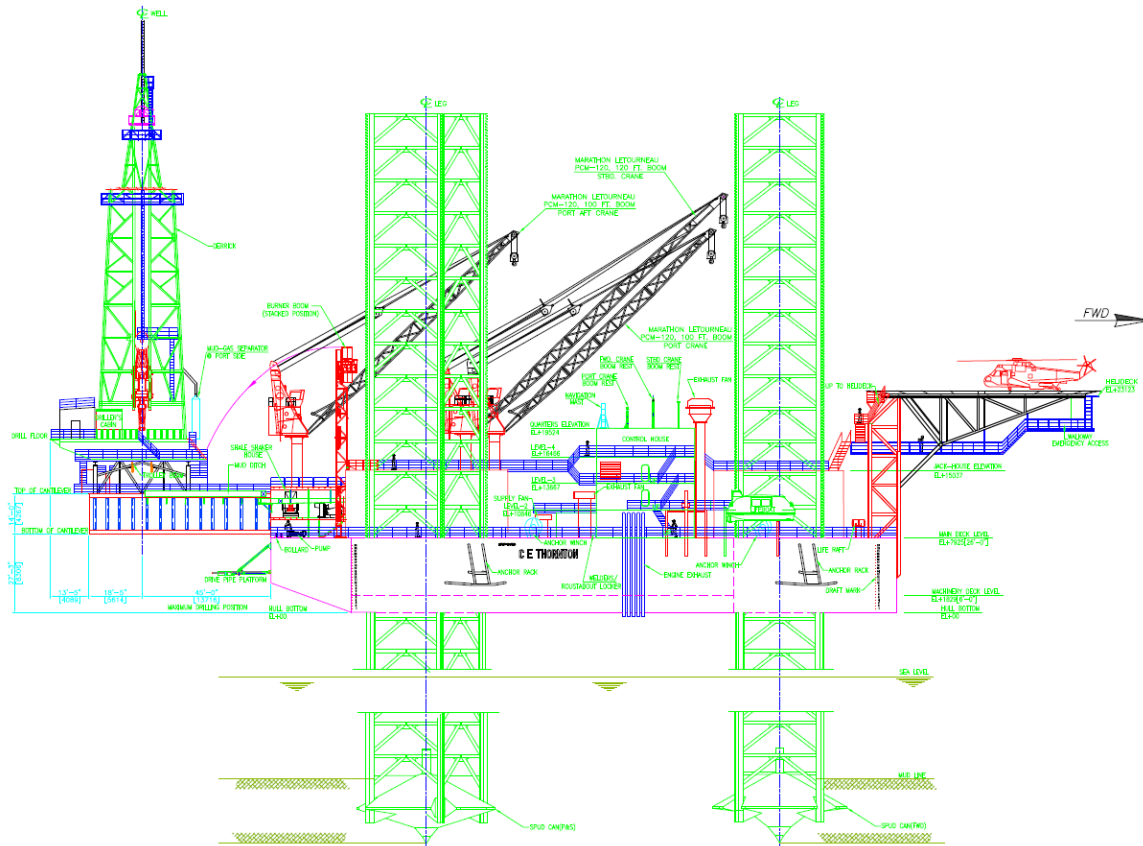
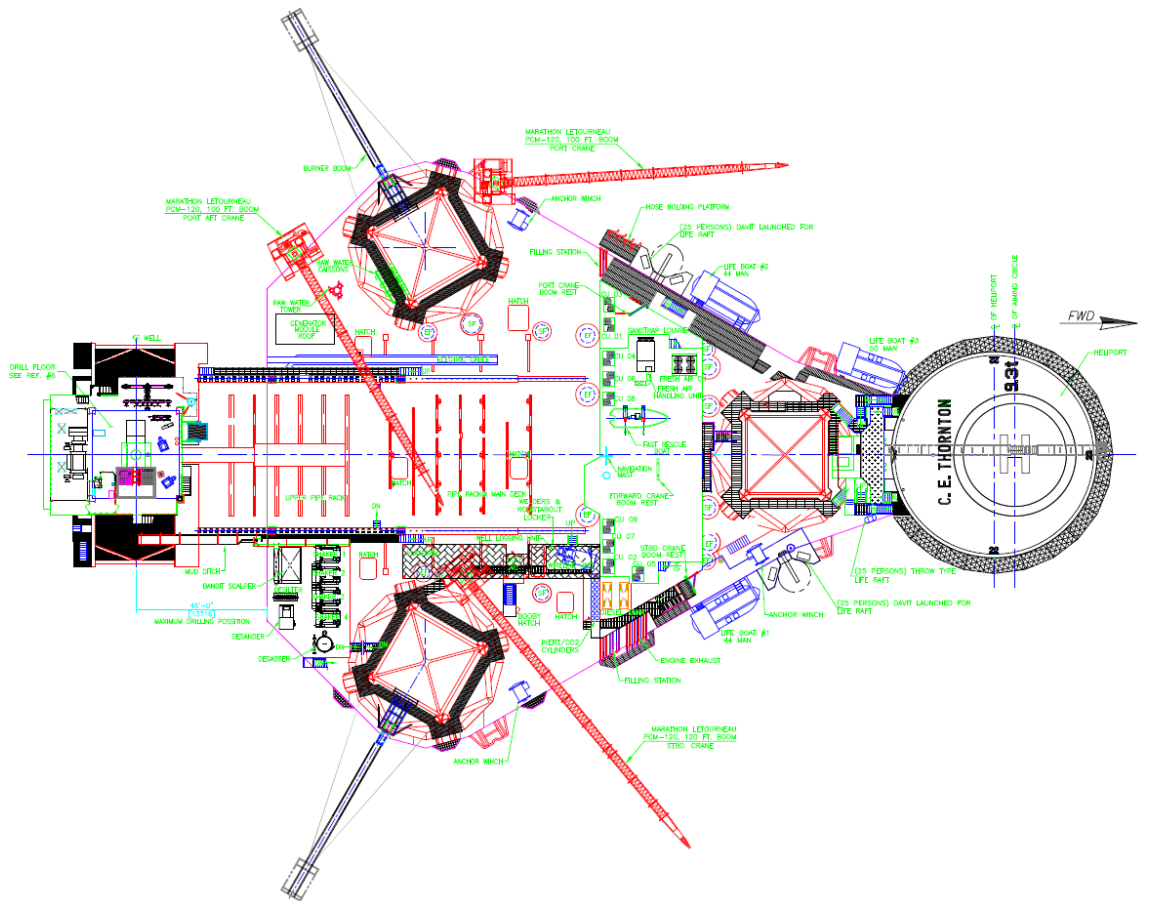
Well Control Equipment	
<b>Diverter</b>	Hydril MSP 500 psi, 29-1/2 in., with 12 in. discharge lines and two (2) 12 in. hydraulically operated ball valves
<b>BOP Stack</b>	One (1) Hydril MSP 21-1/4 in. 2,000 psi annular and one (1) T3 Energy Services 21-1/4 in 2,000 psi double ram preventer  One (1) Hydril GK 13-5/8 in., 5,000 psi annular, one (1) NOV T3-6012 13-5/8 in. 10,000 psi double and one (1) NOV T3-6012 13-5/8 in. 10,000 psi single ram preventer
<b>BOP Handling</b>	Two (2) 25 short tons Beebe hoist and trolley handling system

Cranes	
	Three (3) Marathon LeTourneau PCM-120 AS pedestal cranes with 100 ft. boom (Port & Port Aft) & 120 ft. boom (Starboard), rated for 45 short tons at 24 ft. radius; one (1) Unit Mariner 480 crane with 85 ft. boom (Port Aft), rated for 22 short tons at 20 ft.

R-Jul-2018



These specifications are intended for general reference purposes only, as actual equipment and specifications may vary based upon subsequent changes, the contract situation and customer needs. All equipment shall be operated and maintained at all times, in compliance with Shelf Drilling policies and procedures, and within its stated operational limits or continuous rated capacity, in order to assure maximum operational efficiency.



**C.E. Thornton**

R-Jul-2018



These specifications are intended for general reference purposes only, as actual equipment and specifications may vary based upon subsequent changes, the contract situation and customer needs. All equipment shall be operated and maintained at all times, in compliance with Shelf Drilling policies and procedures, and within its stated operational limits or continuous rated capacity, in order to assure maximum operational efficiency.