



Trident II

300 Foot Jack-up Drilling Unit

General Description

Design	Marathon LeTourneau 84-SC Mod
Year Built / Last Upgrade	1977 / 1985
Hull Dimensions	237 ft. x 200 ft. x 26 ft.
Legs (3)	410 ft. long square legs
Quarters Capacity	130 persons
Maximum Water Depth	300 ft.
Cantilever Envelope	45 ft. by 24 ft.
Maximum Variable Load (drilling)	4,500 kips*

**depending on water depth and geographical location*

Drilling Equipment

Derrick	Lee C. Moore 160 ft. x 30 ft. x 30 ft., static hook load capacity 1,000,000 lbs. with twelve lines (1-3/8 in. drilling line)
Drawworks	Gardner Denver 2100E rated input 2,500 HP driven by three (3) GE 752 DC motors, outfitted with Elmagco 7838 auxiliary electric brake
Rotary Table	Oilwell B-37-1/2, 37-1/2 in. maximum opening driven by GE 752 DC motor with 2-speed transmission
Top Drive	Varco TDS-4S, 650 short tons, 1,000 HP motor, continuous drilling torque 39,154 ft.lbs., with a Varco PH-85 pipe handler
Pipe Handling	NOV ST-80 for tubular OD range from 3-1/2" to 8-1/2"
Mud Pumps	Two (2) Gardner Denver PZ-11, 1,600 HP triplex pumps, each driven by two (2) GE 752 DC traction motors
Solids Control	Three (3) Brandt Dual Tandem scalping shakers; three (3) Derrick 2L48-90F-3P shale shakers; one (1) Derrick FLC 2000 with 3 x 10" cones as desander; one (1) Derrick FLC 2000 with 20 x 4" cones as desilter

Storage Capacities

Liquid Mud	2,316 bbls
Base Oil	1,113 bbls
Drill Water	14,918 bbls
Fuel	1,605 bbls
Bulk Mud	4,000 cu. ft.
Bulk Cement	4,000 cu. ft.

Power Equipment

Main Power	Five (5) Caterpillar D399TA diesel engines 1,225 HP driving five (5) Kato 1,500 KVA 600 volts AC generators
Power Dist.	Six (6) General Electric & one (1) Ross Hill SCR units 750 V

Well Control Equipment

Diverter	Hydril MSP 500 psi, 29-1/2 in., with 12 in. discharge lines and two 12 in. hydraulically operated ball valves
BOP Stack	One Shaffer 21-1/4 in. 2,000 psi annular preventer and one (1) Cameron Type U 21-1/4 in 2,000 psi double ram preventers One Shaffer 13-5/8 in., 5,000 psi annular preventer, one (1) Cameron Type U 13-5/8 in. 10,000 psi double ram preventer and one (1) Cameron Type U 13-5/8 in. 10,000 psi single ram preventer
BOP Handling	2 x 40 short tons Ingersoll Rand / Beebe hoist and trolley handling system

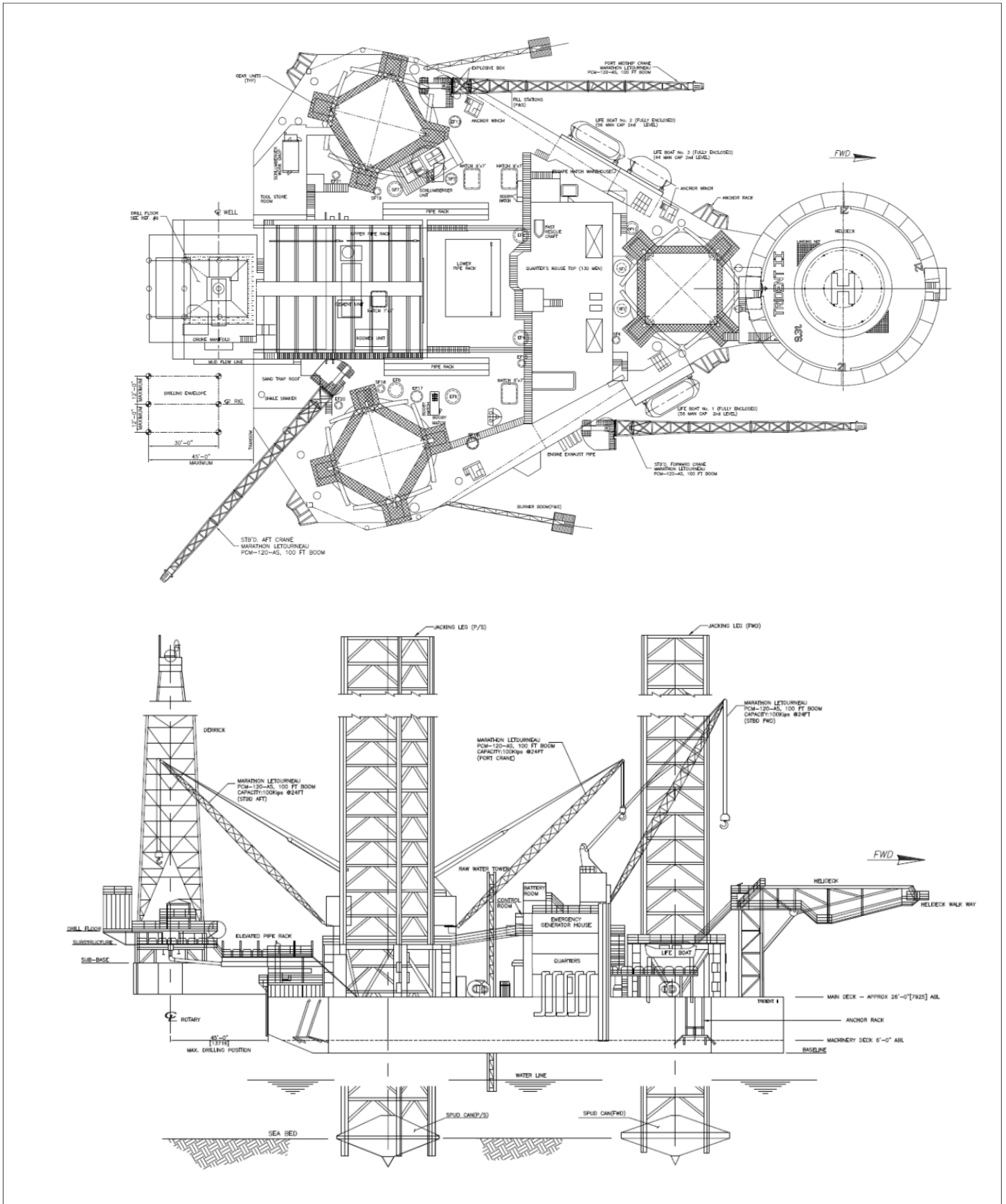
Cranes

Three (3) Marathon LeTourneau PCM-120 AS pedestal cranes with 100 ft. boom, rated for 38 tons at 24 ft. radius

R-Aug-2014



These specifications are intended for general reference purposes only, as actual equipment and specifications may vary based upon subsequent changes, the contract situation and customer needs. All equipment shall be operated and maintained at all times, in compliance with Shelf Drilling policies and procedures, and within its stated operational limits or continuous rated capacity, in order to assure maximum operational efficiency.



Trident II

R-Aug-2014



These specifications are intended for general reference purposes only, as actual equipment and specifications may vary based upon subsequent changes, the contract situation and customer needs. All equipment shall be operated and maintained at all times, in compliance with Shelf Drilling policies and procedures, and within its stated operational limits or continuous rated capacity, in order to assure maximum operational efficiency.