



Trident 15

300 Foot Jack-up Drilling Unit

General Description	
Design	Modtec 300 C-38
Year Built / Last Upgrade	1982 / 2014
Hull Dimensions	220 ft. x 190 ft. x 25.6 ft.
Legs (3)	405 ft. long triangular legs
Quarters Capacity	150 persons
Maximum Water Depth	300 ft.
Cantilever Envelope.....	50 ft. by 30 ft.
Maximum Variable Load (drilling)	Approx. 4,500 kips*

**depending on water depth and geographical location*

Drilling Equipment	
Derrick	NOV bottleneck derrick 160 ft. x 30 ft. x 30 ft., static hook load capacity 1,000,000 lbs. with twelve (12) lines; capable for racking up to 9.5/8" casing
Drawworks	Continental Emsco C2 Type II, 2,000 HP, driven by two (2) GE 752 DC motors, outfitted with NOV EDS automatic driller
Rotary Table	Continental Emsco T4950, 49-1/2 in. opening, driven by Hydraulic Hagglunds motor
Top Drive	Varco TDS-4S, 650 short tons, 1,100 HP, rated to 50,900 ft.-lbs. continuous torque, outfitted with Varco PH-85 Pipe-handler
Pipe Handling	Two (2) Hawk Jaw Jr. Model 65K-2GJR for tubular OD sizes from 3.1/2 in to 8 in; OCA overhead crane for offline tubular handling
Mud Pumps	Three (3) Oilwell A-1700PT 1,600 HP triplex pump, each driven by two (2) DC motors
Solids Control	Three (3) Axiom AX-1 shale shakers

Storage Capacities	
Liquid Mud	2,738 bbls
Base Oil	1,246 bbls
Drill Water	4,360 bbls
Fuel	2,824 bbls
Bulk Mud	4,500 cu.ft.
Bulk Cement	4,500 cu.ft.

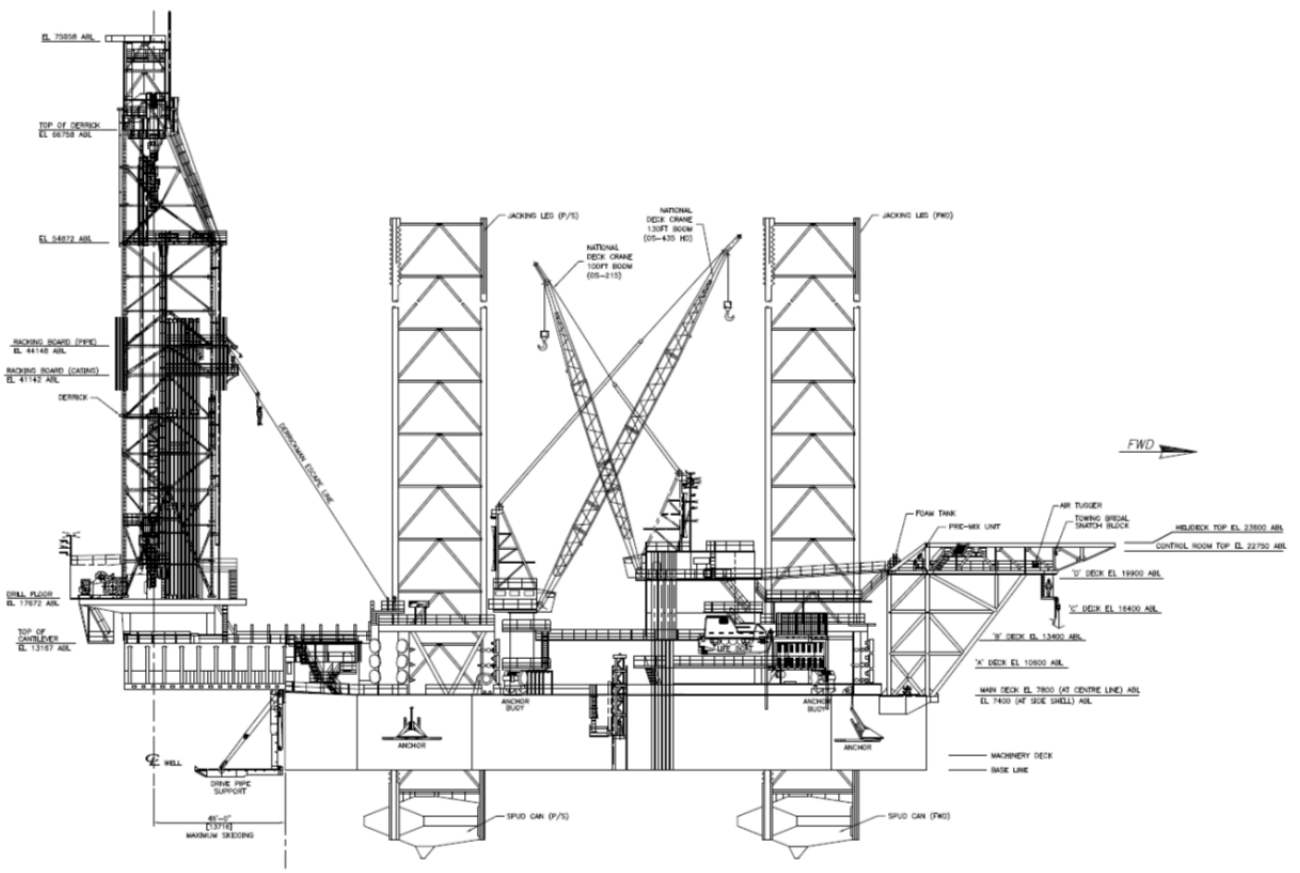
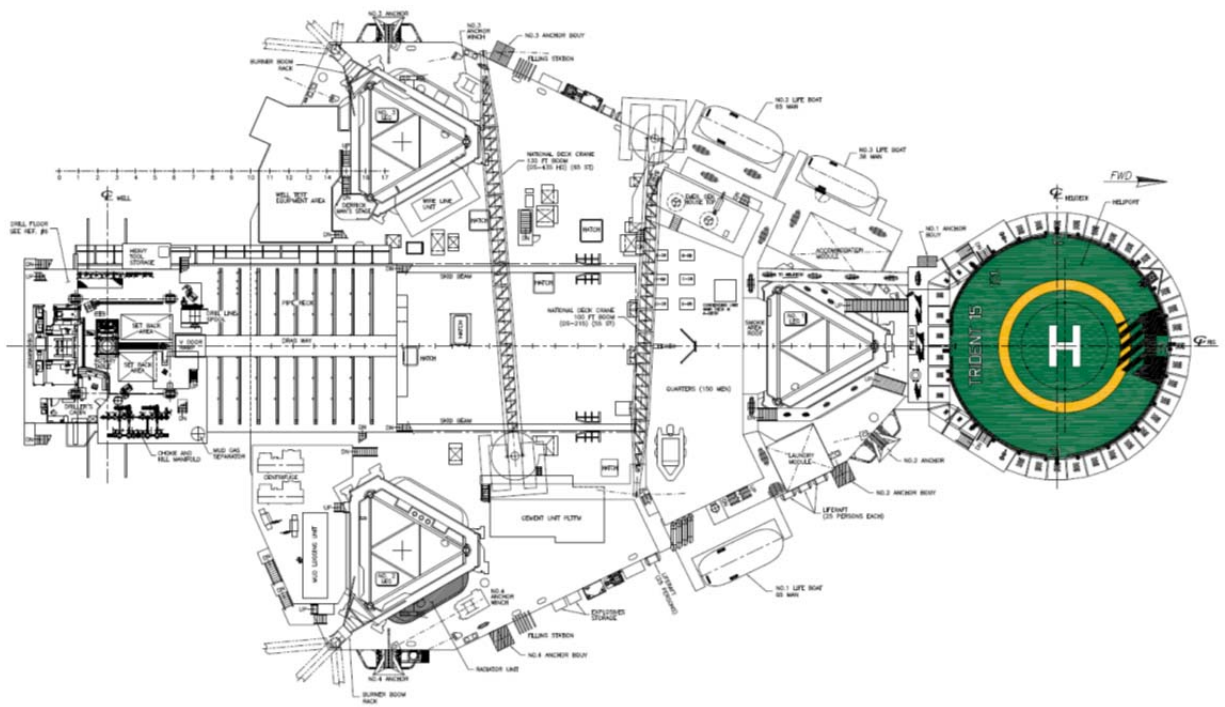
Power Equipment	
Main Power	Four (4) Caterpillar 3516B-DITA 1,855 HP diesel engines, each driving a Kato 1,440 KW 600 volts AC generator
Power Dist.	Five (5) Louisiana 1,800 Amp 600 volts

Well Control Equipment	
Diverter	Regan KFDJ diverter, 500 psi, 36-1/2 in. maximum bore
BOP Stack	One (1) Hydril 13-5/8 in 5,000 psi annular preventer; one (1) Cameron Type U 13-5/8 in 10,000 psi single ram preventer; one (1) Cameron Type U 13-5/8 in 10,000 psi double ram preventer

Cranes	
One (1) National OS-435-HD with 130 ft. boom rated for 60 st at 30 ft. radius located at starboard; one (1) National OS-215 with 100 ft. boom rated for 58 st at 25 ft. radius located at port.	

Special Features

Capable to perform extensive offline activities including making up tubular stands off the critical path, offline cementing and offline wireline logging. Capable to jack up/down with full preload.



Trident 15

R-Aug-2015



These specifications are intended for general reference purposes only, as actual equipment and specifications may vary based upon subsequent changes, the contract situation and customer needs. All equipment shall be operated and maintained at all times, in compliance with Shelf Drilling standard operating manuals, policies and procedures, and within its stated operational limits or continuous rated capacity, in order to assure maximum operational efficiency.